

RIVKIN CENTER

# annual report

## IN THIS REPORT

---

a letter from leadership

---

scientific program  
education program  
signature events

---

financials

---

how to get involved

---



2020

# A LETTER FROM RIVKIN LEADERSHIP

To the Rivkin Center Community:

2020 will go down in history as one of the Rivkin Center's most challenging years. The COVID-19 pandemic resulted in a challenging year for everyone. The Rivkin Center immediately faced the need to pivot our operation, our programs, and every other aspect of our organization.

When the economic issues started impacting the country, we were prepared for our revenue to be negatively impacted. We quickly examined and adjusted our operating expenses. Our goal was to survive the pandemic's impact while continuing to serve our mission. By not replacing team members who left, consolidating job responsibilities, and reducing expenses in both of our major programs, we achieved our goal of reducing operating expenses by \$1 million.

We shifted our focus to hosting the 27th Annual SummeRun & Walk for Ovarian Cancer in a virtual format. Despite the inability to gather 2,500 supporters on the streets of Seattle, we exceeded our adjusted fundraising goal for the event. Supporters hosted private runs all over the city and country, and we honored not just one survivor but all women who have fought ovarian cancer.

Following our application period for scientific research grants, we funded some of the most innovative Pilot and Scholar Awards. We could not support as many researchers in 2020 because of the revenue challenge, but we still invested in the best science we could find — thanks to our team of leading ovarian cancer research reviewers.

2020 was about survival and living to fight in 2021. We won! We had an operating loss of (\$275,830), which was just \$150,000 more than our original budget established in late 2019. We are financially on stable ground with nearly one year of operating expenses in the bank. We are confident that being fiscally conservative in 2021 will help us build toward another breakout year in 2022.

---

*We are confident that  
being fiscally conservative  
in 2021 will help us build  
toward another breakout  
year in 2022.*

Thank you so very much for your support over all the years. It means the world to the Rivkin Center and all the women we are working to save. We look forward to your continued support in 2021 as we continue to thrive!

**KATERIE LAUGHLIN SHEI**  
President, Board of Directors

**JOE WHITE**  
Executive Director

## OUR MISSION

The Rivkin Center strives to improve women's health by helping them prevent, detect early, and survive ovarian and breast cancer.

We do this by:



Investing in cutting-edge research to prevent, detect, and cure ovarian cancer, a deadly and underfunded disease



Educating individuals to prevent and detect ovarian and breast cancer as early as possible



Fostering an ever-growing community of survivors, patients, researchers, clinicians, advocates, and supporters

## OUR VISION

We envision a world where women live longer and healthier lives because cancers are prevented, caught early, or cured.



RIVKINCENTER



# SCIENTIFIC PROGRAM

## 2020 by the numbers

6

Pilot Study Awards

3

Scientific Scholar Awards

1

Bridge Funding Award

Ovarian cancer continues to be underfunded by federal funding agencies when compared to other cancers, despite being the most deadly gynecological cancer. The Rivkin Center received 158 applications for Pilot Study and Scientific Scholar Awards for the 2020 funding period. The large number of applications received reinforces the importance of the work of the Rivkin Center, and the value of private funding for ovarian cancer research.

*The Rivkin Award has enabled me to collect preliminary data and receive a 5-year career development grant from the NIH. I cannot thank Rivkin Center enough for giving new investigators like me an opportunity to start a research career in ovarian cancer.*

Dr. Bo Yu, University of Washington  
2017 Bridge Funding Awardee

# 14.2x

For every dollar invested by the Rivkin Center, our awardees leverage an additional \$14.20 from other funding sources to further their ovarian cancer research. Nearly 62% of awardees raise additional funds from NIH and DOD at an average of \$1.4 million.

This allows researchers to continue their careers in ovarian cancer research, driving for better treatments, early detection, or a cure.

## SYMPOSIUM

Since we were unable to meet in person in 2020, the Rivkin Center hosted the Virtual Ovarian Cancer Research Seminar Series in partnership with the American Association for Cancer Research. These weekly Seminars throughout September provided an educational opportunity and helped keep our community of researchers and clinicians connected during these unusual times. Distinguished scientists discussed their research on early detection, model systems, immunotherapy, and other novel therapies for ovarian cancer.

**Because the Seminars were virtual, participation from all over the world increased substantially. Attendance nearly doubled from our 2018 Symposium with over 730 registrants, and international participation increased from 20% to 31%.**

► Revenue generated: \$48,500



# EDUCATION PROGRAM

2020 by the numbers

**82** workshops

**3K+** people educated

**56** Rivkin EDU team members

The Rivkin Center's education program, Rivkin EDU, gives women the knowledge to be proactive about their health, giving them tools for prevention, early detection, and self-advocacy for ovarian and breast cancer. Rivkin EDU educates women in communities throughout the Pacific Northwest, and at all of the PAC-12 college campuses through our science-based curriculum taught by a health instructor and an ovarian or breast cancer survivor who shares her cancer journey.

► **\$13,126**

Amount raised by campus ambassadors during our Express Feedback for Good campaign in October



## GOING VIRTUAL

- Added polling and quizzes to engage attendees
- Provided platform options depending on group needs
- Increased response rate on post-workshop survey

## IMPACT

**94%**

of attendees are likely or very likely to watch out for health changes in their body after attending a party

**84%**

of attendees are likely or very likely to talk to their family about their medical health history after attending a party



*Rivkin EDU provides such a valuable service and outreach to the community. We had a wonderful time sharing and hearing personal stories.*

- Kaiser Breast Cancer Support Group Facilitator and RN



# SIGNATURE FUNDRAISING EVENTS

2020 by the numbers

**700+**

SummeRun participants

**\$1,135,000**

raised at signature  
events

## SUMMERUN & WALK FOR OVARIAN CANCER

The 27th Annual SummeRun and Walk for Ovarian Cancer was the first-ever virtual event for the Rivkin Center. While the event looked different this year, we had more than 700 individuals and 77 teams across the country celebrate the SummeRun, and **raised over \$410,000**.

A special thank you to KIRO 7 News, Swedish Medical Center, Swedish Cancer Institute, RBC, Sound Credit Union, Washington Trust Bank, bizX, Sequoyah, ACME Food Sales, GSK, CellNetix, and Epic for sponsoring the event. Their support allowed 100% of funds raised to support the Rivkin Center's research and education programs directly.

Drea Mizer, an ovarian and breast cancer survivor, graciously shared her inspiring story. We kept with tradition by mailing survivors their t-shirts and a string of beads for each year since their diagnosis. The pandemic reminded us that we are strong, and the need to fund research is more critical than ever!

Please join us — virtually! — on Sunday, July 11, 2021, for our 28th Annual SummeRun and Walk for Ovarian Cancer. This year we plan to go live with small neighborhood walks and runs alongside the virtual event, as safety allows.

**Learn more at [www.summerun.org](http://www.summerun.org).**

## FAMILY & FRIENDS AUCTION

The Rivkin Center's Family & Friends Auction took place on Saturday, November 7, 2020 with a virtual cocktail hour and live online auction. Guests were able to attend for free or purchase VIP tickets, which came with a hand-delivered bag of J. Bookwalter wine, wine glasses, Madori caramels, and more.

A heartfelt thank you to event sponsors Acme Food Sales, BizX, Laughlin Supply Company, Sequoyah Electric, Seattle SunTan, Washington Trust Bank, Kaye Smith, and KIRO 7 News, as well as our Raise-the-Paddle supporters, for making this special night possible.

While the Family & Friends Auction is typically the "party of the year", we missed the energy that comes with being in the ballroom together. This year's auction **raised \$725,000**, which significantly missed our \$1.5 million goal.

We hope you can join us on Saturday, November 6, 2021 for this year's Rivkin Center Family & Friends Auction. We are exploring various formats for this auction, depending on the status of the pandemic.

**2020**

**Honored Awardees**

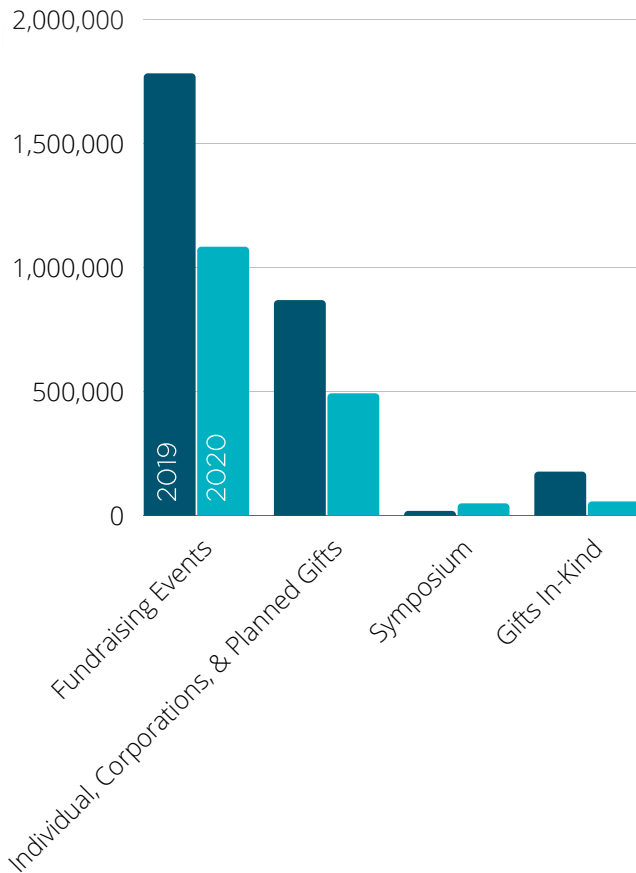
Dean and Gwenn Polik  
Babs Fisher Valor Award

Shelby Conklin  
Courage for Life Award

# 2020 FINANCIALS

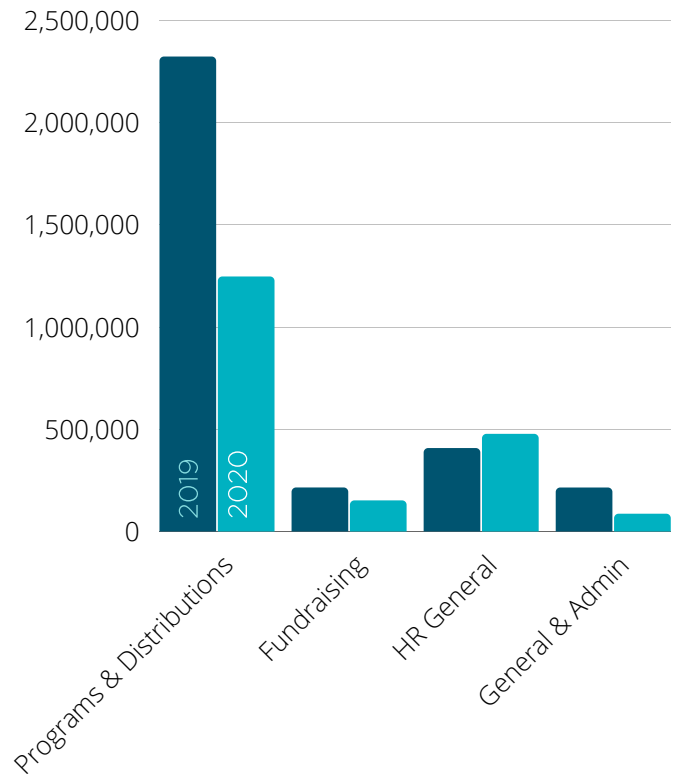
## REVENUE

Total: \$1,682,610

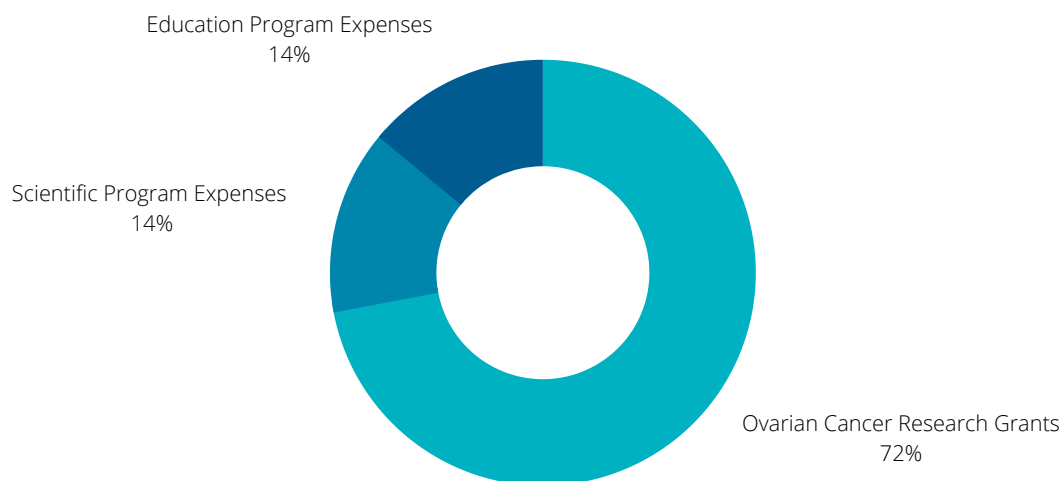


## EXPENSES

Total: \$1,958,440



## PROGRAM EXPENSES



## 2020 BOARD OF DIRECTORS

Katerie Laughlin Schei *President*  
Garnet Anderson, PhD  
Donna Benaroya  
Gloria Bensussen  
Thomas Brown, MD *Vice Chairperson*  
Charles Drescher, MD  
Libby Hanna  
Bobbie Hinton

C. Eric Morse  
Alex Smith *Secretary*  
Sachia Stonefeld Powell  
Melissa Rivkin  
Katie Van Kessel, MD  
Dan Veljovich, MD  
Kirsten Ward

## EMERITUS

Saul Rivkin, MD  
Eddie Fisher

## EX OFFICIO

Joe White, MBA, Executive Director  
Mary L. (Nora) Disis, MD

## SCIENTIFIC ADVISORY BOARD

Mary L. (Nora) Disis, MD (Chairperson)  
*University of Washington*

Garnet Anderson, PhD  
*Fred Hutchinson*

Deborah K. Armstrong, MD  
*Johns Hopkins*

Douglas Levine, MD  
*NYU Langone Health*

Ursula Matulonis, MD  
*Dana-Farber Cancer Institute*

Santo Nicosia, MD  
*University of South Florida*

Kunle Odunsi, MD, PhD  
*Roswell Park Cancer Institute*

Victoria Seewaldt, MD  
*Duke University Medical School*

Weiping Zou, MD, PhD  
*University of Michigan  
Medical School*

## HOW TO SUPPORT THE RIVKIN CENTER

